

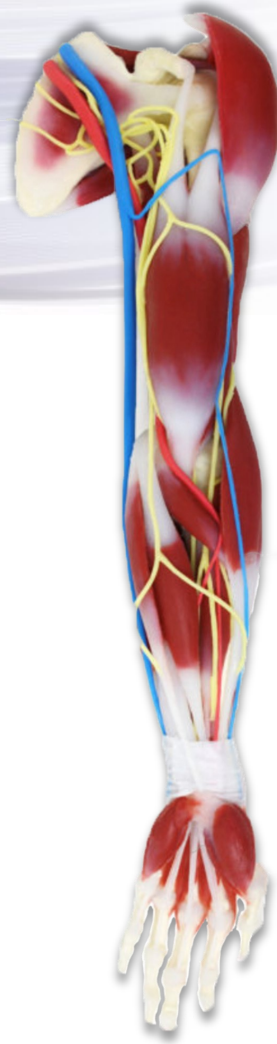


G3 Anatomy Arm

Our SynDaver Silicone Anatomy Arm includes all of the major skeletal, muscular, and cartilaginous structures between the scapula and the fingertips. This model is made from silicone and polymer composites, so unlike our standard wet-tissue products this model can be stored on a shelf! These education-grade models include bones, joints, muscles, and tendons, and all joints are semi-articulating.

Included Components:

- | | |
|------------------------------------|-------------------------------------|
| 1. Posterior Deltoid | 16. Flexor Digitorum Profundus |
| 2. Infraspinatus | 17. Extensor Digitorum |
| 3. Medial Deltoid | 18. Extensor Carpi Ulnaris |
| 4. Teres Major | 19. Extensor Digiti Minimi |
| 5. Scapula | 20. Pronator Teres |
| 6. Triceps Brachii | 21. Abductor Pollicis Longus |
| 7. Anterior Deltoid | 22. Palmaris Longus |
| 8. Brachialis | 23. Flexor Carpi Radialis (+Longus) |
| 9. Coracobrachialis | 24. Flexor Digitorum Superficialis |
| 10. Extensor Carpi Radialis Longus | 25. Extensor Pollicis Longus |
| 11. Anconeus | 26. Extensor Pollicis Brevis |
| 12. Brachioradialis | 27. Extensor Indicis |
| 13. Biceps Brachii | 28. Extensor Digitorum Profundus |
| 14. Flexor Carpi Ulnaris | 29. First Digit (Thumb) |
| 15. Extensor Carpi Radialis Brevis | 30. Fifth Digit (Pinky) |



Structural Features

Skeletal, vascular, nervous, muscular, fascial and cartilaginous structures of the shoulder, upper arm, forearm, wrist and hand.

Construction Materials

Polymer composite bones with integral fascia sheath. Muscular tissues are organ silicate composite.