

SynAtomy Wearable Chest Tube Trainer

160400

Package Contents

- 1 Kydex Armor Chassis
- 1 Soft Tissue Pad
- 5 Ribs

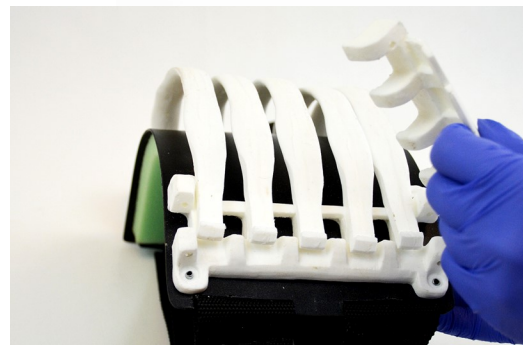
Quick Start Guide



Chest Tube Trainer Assembly Instructions



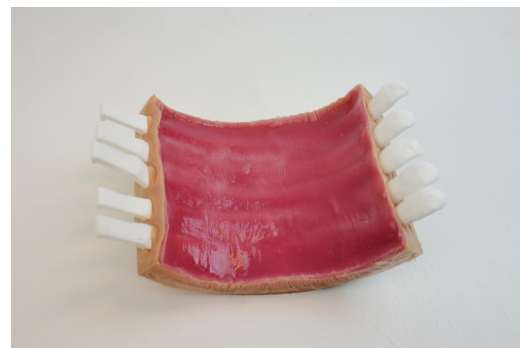
Step 1: Remove the pins.



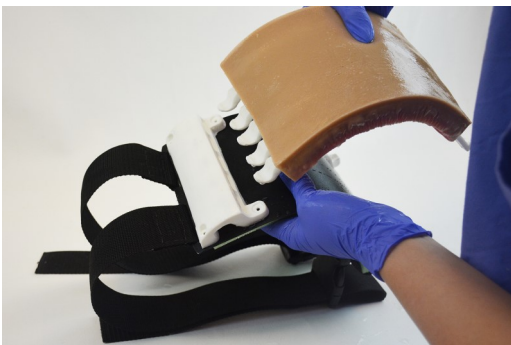
Step 2: Remove the retaining plate.



Step 3: Insert ribs into soft tissue pad.



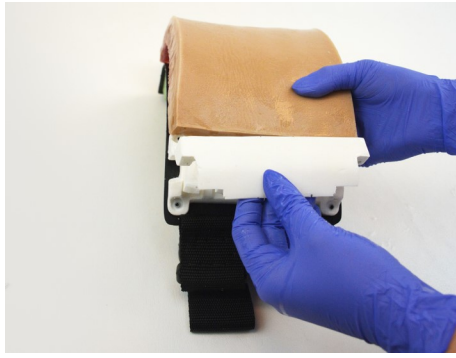
Ensure the muscular side is in the "inside" of the cage.



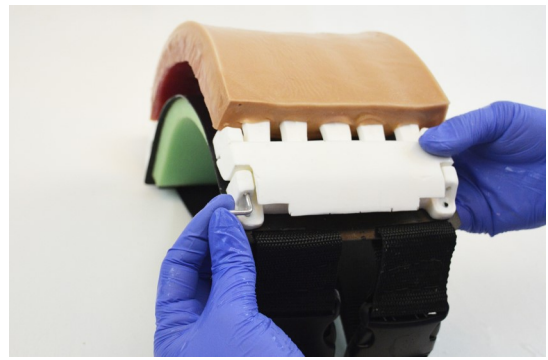
Step 4: Return the ribs to the chassis.



Step 5: Align ribs with the chassis.



Step 6: Replace the retaining plate.



Step 7: Replace both pins.



The unit is now ready to be worn on a person or manikin.

Use the strap adjuster to tighten the elastic bands.

Handling and Storage

All SynDaver Labs soft tissue products are made from water, fibers, and salts. Our oldest retained products are nearly twenty years old and this model will last several decades as long as it remains hydrated. The soft tissues should be stored in a plastic container or large bag with a small amount of excess water.

Best practice also involves wearing gloves during use to keep the model clean. In any case, always wash the model with soap and water prior to storage. Please see the SynDaver Care and Storage Guide at syndaver.com/care