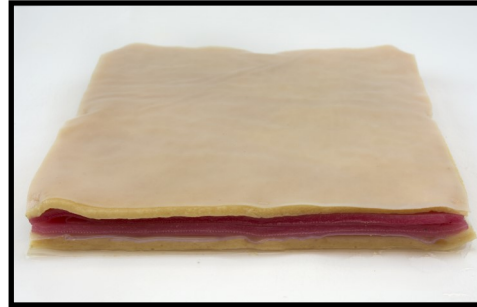


SynAtomy Tissue Plate Designer

142060



Our tissue plate designer allows you to build complex tissue constructions from our extensive library of SynTissue brand synthetic human tissues. These tissues may generally be layered in any order.

Please call and ask to speak to one of our sales technicians to select the tissues to be used in constructing your Tissue Plate. You may select the **Surface Layer** from *Adult Skin, Pediatric Skin, Fibrous Fascia, Fascia Latae and Mucosal Fascia*. The **Subsurface Layer** from *Sub-Q Fat, Fibrous Fascia, Fascia Latae, Mucosal Fascia and Skeletal Muscle*. **Additional layers** can be selected from *Fibrous Fascia, Fascia Latae, Mucosal Fascia, Cardiac Muscle and Skeletal Muscle*. The layers can be loose, bonded or sutured. There is an additional cost for bonded or sutured plates.

Plates start out 25cm x 25cm square and are trimmed post-production to eliminate edge defects. The standard thicknesses for skin and fascias is 1.0mm and for fat and muscle layers 5.0mm.

Basic model construction employs our patented SynTissue brand synthetic human tissues. These materials are experimentally designed on the basis of physical tests performed on actual living tissue. Each tissue is validated (tensile modulus, abrasion resistance, penetration force, coefficient of friction, thermal conductivity, dielectric constant, etc.) under the same physical conditions as the live tissue it is designed to simulate. The resulting synthetic tissue responds to stimulus much like the real living tissue.

Extraordinary Features: SynTissue synthetic human tissues made from salt, water and fiber—which feature the world's most realistic tactility.

SynTissue synthetic human tissues match the acoustical characteristic of real human tissue.

All of our products are made in the USA.