

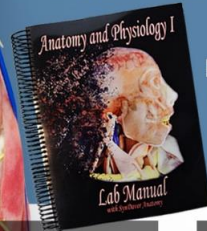
SynDaver Labs

SynDaver Synthetic Human • Model Comparison Chart

Anatomy Model

Included with every model

- Procedure Table with Castors
- ECS Storage Case
- Body Bag
- Circulation Pump
- Drainage Pump with 5' Hose
- 1 Qt Bottle Storage Solution [170160]
- Anatomy and Physiology I Lab Manual



Pages: 502
ISBN: 978-0-9972005-3-9
[170500]

Also included with every Surgical Model

- Cardiovascular Pump System [170100]



Also included with every Patient

- Patient Control Box
- Two Tablets



Features

Complete Musculoskeletal System

Abdominal and Thoracic Organs

Full Body Skin

Reference Vasculature

Patent Vasculature

Peripheral Nerves

Complex Airway Compatible with Intubation

Compatible with Imaging

Physiology Control

	Anatomy Model	Surgical Model	SynDaver Patient	Mortuary Model	Musculoskeletal Model
Complete Musculoskeletal System	✓	✓	✓	✓	✓
Abdominal and Thoracic Organs	✓	✓	✓	Optional (excludes heart)	
Full Body Skin	Optional	✓	✓	✓	
Reference Vasculature	✓				Optional (peripheral only)
Patent Vasculature		✓	✓	✓	
Peripheral Nerves	✓	Optional	Optional		
Complex Airway Compatible with Intubation	✓	✓	✓		
Compatible with Imaging	✓	✓	✓*	✓	
Physiology Control			✓		
	♀:101200 ♂:101250	♀:101600 ♂:101650	♀:101500 ♂:101550	Unisex: 101300	♀:101400 ♂:101450