

## SynAnatomy Adult Cric Trainer

160440

### Quick Start Guide

#### Package Contents

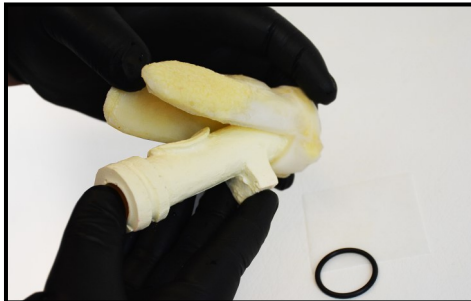
- Plastic Base
- Muscular Neck Form
- Skin Overlay
- Cric Carriage
- Silicone O-Ring
- Cricothyroid Cartilage
- Replacement Tissue Set

#### Cric Membrane Replacement



##### Step 1:

After first use, remove the skin overlay to expose the muscular neck form and cric carriage. Set the skin overlay aside in a safe, clean place where it will not be damaged.



##### Step 2:

Lift the cric carriage out of the model by inserting an index finger into the inferior (near clavicle) edge of the opening in the top of the form. Flip the cricothyroid cartilage up and remove the old membrane and silicone ring by grasping the edge of the membrane and pulling upward.



##### Step 3:

Discard the old membrane but retain the silicone ring. Place a new membrane over the carriage and press the ring in place around the raised edge of the opening to retain the membrane.



**Step 4:** Place the cric carriage back into the neck form. Cut a small square window in the skin overlay over the incision site. Place the overlay back over the muscular form and then insert a cric replacement tissue beneath the square window. The model is now ready for use.

### **Skin Replacement**

This model is shipped without any openings cut into the skin overlay. After first use, a square or circular window may be cut into the overlay over the region where the procedure is performed. The replacement skin window (if used) may be tucked inside this window or laid over the top surface of the skin overlay.

### **Handling and Storage**

All SynDaver Labs soft tissue products are made from water, fibers and salts. Our oldest retained products are nearly twenty years old and this model will last several decades as long as it remains hydrated. The soft tissues should be stored in a plastic container or large bag with a small amount of excess water.

Best practice also involves wearing gloves during use to keep the model clean. In any case, always wash the model with mild soap and water prior to storage.